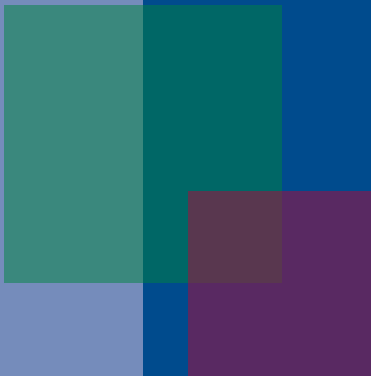


International IDEA

The International Institute for Democracy
and Electoral Assistance

Financial Statements for the year ended 31 December 2011



www.idea.int

Auditor's report

To the council of the International Institute for Democracy and Electoral Assistance

Report on the Financial Statements

We have audited the accompanying financial statements of the International Institute for Democracy and Electoral Assistance, which comprise the balance sheet as at December 31, 2011 with a balance sheet total of TEuro 19 617, the income statement and statement of changes in reserves for the year then ended with a deficit of TEuro 1 525, and a summary of significant accounting policies and other explanatory notes.

Responsibilities of the management for the financial statements

The management is responsible for the preparation and fair presentation of these annual accounts in accordance with the basis of preparation set out under Significant Accounting Policies and the Institute's Finance regulations, and for such internal control as the management determine is necessary to enable the preparation of annual accounts that are free from material misstatement, whether due to fraud or error.

Auditor's responsibility

Our responsibility is to express an opinion on these financial statements based on our audit. We conducted our audit in accordance with International Standards on Auditing. Those standards require that we comply with ethical requirements and plan and perform the audit to obtain reasonable assurance about whether the financial statements are free from material misstatement.

An audit involves performing procedures to obtain audit evidence about the amounts and disclosures in the financial statements. The procedures selected depend on the auditor's judgement, including the assessment of the risks of material misstatement of the annual accounts, whether due to fraud or error. In making those risk assessments, the auditor considers internal control relevant to the entity's preparation and fair presentation of the annual accounts in order to design audit procedures that are appropriate in the circumstances, but not for the purpose of expressing an opinion on the effectiveness of the company's internal control. An audit also includes evaluating the appropriateness of accounting policies used and the reasonableness of accounting estimates made by the management, as well as evaluating the overall presentation of the financial statements.

We believe that the audit evidence we have obtained is sufficient and appropriate to provide a basis for our audit opinion.

Opinion

In our opinion, the financial statements for the year 2011 have been prepared in accordance with the accounting policies described under Significant Accounting Policies and the Institute's Finance regulations.

Furthermore, in our opinion, the accounts for grants have been kept in accordance with generally accepted accounting principles. The grants being reviewed have been used as stated in the application.

Stockholm, May 10 2012
Ernst & Young AB



Thomas Lönsnröm

Authorized Public Accountant

International Institute For Democracy And Electoral Assistance

BALANCE SHEET

As at 31 December 2011 and 2010

(In Thousands of Euros)

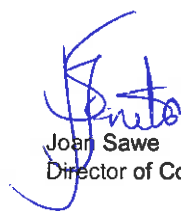
	<u>Note</u>	<u>2011</u>	<u>2010</u>
ASSETS			
Cash and Bank	1	18,319	19,579
Receivables			
Contributions	2	592	553
Prepaid Expenses/Accrued Income		474	28
		1,066	581
Other Receivables			
Value Added Tax		78	123
Field Office Advances		0	0
Other		155	15
		233	138
TOTAL ASSETS		19,617	20,299
LIABILITIES AND CAPITAL			
Accounts Payable			
Trade Creditors and Accruals	3	2,422	2,103
Personnel Liabilities	4	925	952
Contributions	3	4,795	4,245
		8,143	7,299
Capital and Reserves			
Reserves	5	11,474	13,000
TOTAL LIABILITIES AND CAPITAL		19,617	20,299

See accompanying notes to Financial Statements.



Vidar Helgesen
Secretary-General

10 May 2012



Joan Sawe
Director of Corporate Services

10 May 2012

International Institute For Democracy And Electoral Assistance

Income Statement

For the years ended December 31, 2011 and 2010

(In thousands of Euros)

	Note	2011		Total	2010
		Core Funds	Restricted Funds		
Revenues and Gains					
Contributions	6.a/b	12,589	8,302	20,891	21,775
Other revenues and gains	6.c	1,104		1,104	1,401
Total revenues and gains		13,693	8,302	21,995	23,176
Expenses					
Programme costs	7	11,187	7,477	18,664	15,234
Management and Administration	7	4,031	825	4,857	3,507
Total expenses		15,218	8,302	23,520	18,741
NET SURPLUS		(1,525)	(0)	(1,525)	4,435
Classification by expense type					
Personnel costs	8 & 9	6,286	2,293	8,579	7,880
Consultants		3,447	2,572	6,020	4,146
Travel		3,699	1,467	5,166	3,705
Operating Costs		1,785	1,970	3,755	2,873
Fixed Assets					136
Total		15,218	8,302	23,520	18,741

See accompanying notes to Financial Statements.

The International Institute For Democracy And Electoral Assistance

Statement of Changes in Reserves

For the years ended December 31, 2011 and 2010
(In thousands of Euros)

	General Reserve	Social Security Reserve	Currency Reserve	Working Capital Reserve	Operating Reserve	Total
Balance, January 1, 2010	837	629	642	3,499	2,996	8,603
Transfer (to)/from Working Capital				591	-591	0
Transfer (to)/from Currency			529		-529	0
Net Movement in Social Security		-39			4,435	-39
Net surplus						4,435
Balance, December 31, 2010	837	590	1,171	4,090	6,311	13,000
Transfer (to)/from Working Capital				545	-545	0
Transfer (to)/from Currency			-24		24	0
Net Movement in Social Security						0
Net surplus					-1,525	-1,525
Balance, December 31, 2011	837	590	1,147	4,635	4,265	11,474

See accompanying notes to Financial Statements.

Accounting Policies & Notes to Financial Statements

31 December 2011 and 2010

(In thousands of Euros)

Statement of Activities

Created in 1995, the International Institute for Democracy and Electoral Assistance (IDEA) is an intergovernmental organization with 27 member states from six continents. It has a mandate to support sustainable democracy worldwide. IDEA brings together those who analyse and monitor trends in democracy with those who engage directly in political reform or act in support of democracy at home and abroad. IDEA works with new and long-established democracies, helping to develop and strengthen the institutions and culture of democracy. It operates at international, regional and national levels, working in partnership with a range of institutions.

Significant Accounting Policies

A summary of the significant policies adopted in the preparation of the accompanying combined financial statements are as follows:

- a. Use of estimates** - The preparation of the financial statements requires management to make estimates and assumptions that affect the reported amounts of assets and liabilities and disclosure of contingent assets and liabilities at the date of the financial statements and the reported amounts of revenues and expenses during the reporting period. Although management believes the estimates and assumptions used in the preparation of these combined financial statements were appropriate in the circumstances, actual results could differ from those estimates and assumptions.
- b. Accrual Accounting** - The financial statements have been prepared using the accruals basis of accounting.
- c. Revenue recognition** – Restricted contributions are recognized as revenues when the grant conditions have been substantially met or the donor has explicitly waived such conditions. Core contributions are recognized as revenues in the calendar year in which the remittance is received unless the funds have been received in advance for the following calendar year. Contributions in respect of the reporting period but received in the following calendar year are also recorded as revenues if received before the books have been closed.
- d. Contributions receivable** - Contributions receivable represent amounts recoverable from donors for restricted grants promised or pledged for which the conditions have been met, and for core contributions received after the calendar year but before the books for that year have been closed.

3

- e. **Cash and cash equivalents** - Cash and cash equivalents comprise cash on hand, bank current accounts and interest bearing bank deposits.
- f. **Fixed Assets** – All fixed assets are written off in full at the time of acquisition.
- g. **Income taxes** - The Organization is tax-exempt; accordingly, no provision for income taxes has been made in the accompanying combined financial statements.
- h. **Accounts payable to donors** - These represent grants received in advance from donors for core and restricted grants, for which the grant conditions have not yet been met. Also included are amounts payable to donors where donors require reimbursement of unexpended grant balances.
- i. **Other accounts payable and accruals** - These represent amounts to be paid in the future for goods or services received, whether billed by the supplier or not.
- j. **Provisions** - Provisions are recognized for current obligations that (i) result from a past event, (ii) are expected to result in the use of economic resources, and (iii) can be reasonably estimated.
- k. **Reporting currency** - The currency of report is the Euro. Assets and Liabilities in other currencies are translated to Euro at rates of exchange ruling at the end of the financial year as published by the Swedish Central Bank.
Transactions in other currencies are translated to Euro at the average rate of exchange as published by the Swedish Central Bank for the month in which the transaction took place.
Significant exchange gains and losses are transferred to or from the Currency Reserve.

η

Notes to the Financial Statements

1. Cash and cash equivalents

	2011	2010
Cash on hand	28	13
Cash at Bank	18,291	19,566
Total	<u>18,319</u>	<u>19,579</u>

2. Receivables Contributions (Schedule 1)

	2011	2010
Core contributions	299	312
Restricted Projects	293	241
Total	<u>592</u>	<u>553</u>

3. Accounts payable

	2011	2010
Contributions (Schedule 1)		
Core	1,288	1,342
Restricted Projects	3,507	2,903
Total	4,795	4,245
 Trade Creditors and Accruals		
Trade Creditors	1,943	1,424
Accruals	479	678
Total	<u>2,422</u>	<u>2,103</u>



4. Personnel Liabilities

	2011	2010
Salary	0	23
Annual Leave	157	219
Pension	448	314
Separation Allowance	164	220
Parental Leave	81	87
Social Charges	0	1
Withholding Taxes	57	79
Home Fare Grant	18	11
Total	<u>925</u>	<u>952</u>

Staff has an **annual leave** entitlement of 30 working days per calendar year. Up to 10 days may be carried forward if not utilised by 31st January of the following year.

All staff receive a **pension contribution** equivalent to 2/12 of their yearly gross salary. For expatriates the pension is payable in cash at the end of every twelve months of service. Contributions for staff members who, according to the host country agreement with the government of Sweden, are taxable in Sweden are paid monthly into a pension fund.

Staff members who have relocated to Sweden are entitled at the expiry of their contracts to a **separation allowance** on relocation.

5. Reserves

Movements in reserves are detailed in the Statement of Changes in Reserves and are classified as follows:

- a. **General Reserve** - This reserve provides long-term protection for the Institute by safeguarding it from unforeseen developments that could seriously affect its stability and effectiveness. Appropriations may only be made in extreme circumstances. No appropriations were made from the fund during the year;
- b. **Social Security Reserve** – This reserve represents amounts set aside from refunds of social charges by the Swedish Tax Authority to meet possible future commitments to staff and former staff in respect of possible loss of state pension rights or other social insurance rights. There was no movement this year.

- c. **Currency Reserve** – This reserve provides a facility to overcome distortions in its operational expenditures caused by fluctuations in the exchange rate between the Euro and other currencies. There was a decrease in this reserve, equivalent to the exchange loss of €24 made during the year (vs. gain of €529 in previous year).
- d. **Working Capital Reserve** - This reserve provides liquidity should contributions from Member States be received at a slower rate than approved operational expenditure. This reserve is targeted at 20% of the annual income received in the immediately preceding year.

6. Revenues

- a. **Contributions** - Funds received from donors are used to support the Institute’s programs. Programs must fall within the mandate of the Institute and be approved by the Governing Council. Details of all contributions are set out in Schedules 1 and 2 of these financial statements and are classified into Core and Restricted contributions. Core contributions are used to support the Institute’s activities. Restricted contributions support activities that are mutually agreed upon between the Institute and the donor.
- b. **In-kind Contributions** – The government of Sweden pays to the City of Stockholm a rent for the Strömsborg building that International IDEA uses as its headquarters. This arises from an agreement between the Ministry of Foreign Affairs and the City of Stockholm. For 2010, this donation amounted €278 and €782 for 2011. From September 2011, this building has been under renovation and is not expected to be ready until September 2012. During this time, IDEA has rented alternative premises and charged this cost in its accounts as Office Rent
- c. **Other revenue and gains** - For the years ended 31 December 2011 and 2010, other revenues and gains comprised:

	2011	2010
Tax Refund	695	749
VAT Refund	262	167
Exchange Rate Gain		529
Interest Income	138	24
Book Sales	4	6
Sundry Income	5	- 74
Total	<u>1,104</u>	<u>1,401</u>

Sundry income includes the recognition of losses on restricted grants related to previous financial years.

International IDEA is VAT exempted for specific purchases. As in 2010, the VAT refund for 2011 has been booked as Other Revenue.

7. Expenses and losses

Details of expenditures are segregated between Operations and Management & Administration, and are set out in Schedule 3 of these financial statements.

Operations expenses - These comprise all expenditures by HQ, Regional and Field Offices directly related to the Institute's main programmatic activities.

Management and general expenses - These expenses comprise general administration expenses, including expenditures applicable to the Council of Member States, the Board of Advisers, Secretary-General Office, External Relations and Governance Support, Communications, Finance and Administration, Human Resources, Information Technology and Office Accommodation.

8. Personnel costs

In addition to the above formal employees, IDEA has 51 contracted consultants/supports predominantly working in Regional Offices. The salary cost shown below includes both categories.

	2011	2010
Salary	5,576	4,513
Annual, Parental and Sick Leave	710	1,385
	6,286	5,898
Pension Contributions	1,259	1,323
Insurance	325	320
Other Benefits	709	339
Total	<u>8,579</u>	<u>7,880</u>

9. Human resources

International IDEA has defined gender equality as an important strategic objective within its management practices and works to support sustainable democratic change through the provision of comparative knowledge, assisting in democratic reforms and influencing policy and politics.

International IDEA has in place and enforces a policy of gender equality that requires equality and fairness in recruitment practices.

In order to evaluate recruitment practices, the following 3 Tables summarise the situation based on the fact that as at 31st December 2011, International IDEA employed 86 Staff Members (compared to 72 in 2010):

17

Table1: Employees' nationality by region.

Region	2011	2010
Nordic Countries	22	22
Europe	27	20
North America	7	7
Central and South America	7	5
North Africa and Middle East	1	1
Central and Southern Africa	14	10
Asia	5	5
Oceania/Pacific	3	2
TOTAL	86	72

Table 2: Location of Staff

Region	2011	2010
Stockholm	68	60
Brussels	2	1
Latin America and Caribbean	3	3
Africa and Middle East	9	6
Asia	3	1
New York	1	1
TOTAL	86	72

Table 3: Distribution of staff members by gender

The gender distribution of staff as at December 2011 is 50% male and 50% female.

Levels	2011		2010	
	M	F	M	F
Senior Management (level 1-3)	67%	33%	73%	27%
Mid-Management (level 4-5)	59%	41%	59%	41%
Other (level 6-9)	43%	58%	41%	59%
TOTAL	43	43	31	31

M

Schedule of Income

For the years ended December 31, 2011 and 2010
(In EUR)

Donors	Grant Agreement No.	Project No.	2011			2010		
			Opening Balance	Cash receipts/ repayments	Accounts receivable	Advance payment	Grant	Grant
UNRESTRICTED (CORE) CONTRIBUTIONS			1,342,045	10,864,298	298,722	(1,287,736)	12,589,036	12,464,168
Australia			115,305	-	117,825		223,410	307,080
Barbados				14,808			6,966	7,490
Botswana				29,734			13,932	14,980
Canada				741,400			720,400	724,400
Chile				122,851			123,082	142,015
Costa Rica				-	3,870		3,483	3,745
Denmark				402,300			402,300	403,200
Finland				345,000			345,000	345,000
Ghana				3,118			1,530	3,118
Germany				400,000			400,000	400,000
India				36,630			36,630	37,450
Mauritius				7,302			6,966	7,490
Mexico				36,330			34,830	37,450
Mongolia				5,000			5,000	-
Namibia				1,465			1,431	-
Netherlands				1,500,000			(250,000)	1,500,000
Norway			985,600	935,860		(900,200)	2,236,350	2,076,650
South Africa				-	23,775		25,425	50,800
Spain				250,000	150,000		150,000	250,000
Sweden				5,375,300			5,473,300	5,081,300
Switzerland			241,140	657,200			877,140	572,000
Uruguay				-	2,040		1,862	-
Other				-	1,212		-	-
RESTRICTED CONTRIBUTIONS			2,334,249	8,138,778	292,977	(3,507,657)	8,302,187	9,310,650
Australia								
Australian Agency for International Development (AusAID)			143,145	992,903	49,671	(232,819)	952,900	261,802
Belgium								
The Ministry of Foreign Affairs			6,051	-	-	(6,051)	-	201,343
Canada								
Canadian International Development Agency (CIDA)			-	58,649	-	(22,849)	35,800	-
Department of Foreign Affairs and International Trade (DFAIT)			-	25,326	63,348	(38,264)	48,443	-
International Development Research Centre (IDRC)			3,828	(3,828)	-	-	-	1,836
European Union								
The European Commission			104,012	1,163,376	98,084	(150,746)	1,214,726	1,783,014
Finland								
The Ministry of Foreign Affairs			28,037	161,963	-	(46,074)	143,926	106,511
Inter American Development Bank			-	41,355	80,312	(10,155)	111,512	-
Italy								
The Ministry of Foreign Affairs			-	-	-	-	-	491,164
Japan								
World Support for Development				145,270	-	(145,270)	-	-
Norway								
The Royal Ministry of Foreign Affairs			939,862	4,423,362	-	(1,747,055)	3,616,169	3,999,064
Organisation of American States - General Secretariat			13,995	34,329	-	(1,140)	47,184	23,224
Romania								
The Ministry of Foreign Affairs			-	50,000	-	(19,012)	30,988	-
Spain								
The Spanish Agency for International Cooperation (AECI)			615,895	200,000	0	(287,494)	528,401	603,423
Ayuntamiento de Madrid / Fundacion Instituto Universitario de Investigacion Jose Ortega y Gasset (FOG)			43,081	-	-	(0)	43,080	84,288
Sweden								
The Ministry of Foreign Affairs			794,343	-	-	(380,322)	414,021	485,864
Switzerland								
The Swiss Federal Department of Foreign Affairs			161,026	567,080	-	(347,528)	380,579	171,430
United Nations								
The United Nations Development Program (UNDP)			(191,432)	826,116	-	(18,225)	616,459	1,014,998
The United Nations Office for Project Services (UNOPS)			-	13,267	0	-	13,267	-
The United Nations Development Fund for Women (UNIFEM)			-	-	-	-	-	82,588
United Nations Entity for Gender Equality and the Empowerment of Women			-	62,867	1,561	(9,002)	55,426	-
United States of America								
The Ford Foundation			-	94,956	-	(45,652)	49,304	-
TOTAL RESTRICTED AND UNRESTRICTED CONTRIBUTIONS			4,668,494	18,992,976	591,699	(4,795,393)	20,891,223	21,774,816

Earmarked ContributionsFor the period 01 January 2011 to 31 December 2011
(In Euro)

Donor and Programme/Project	Grant Agreement No	Project No	Grant Period (MM/DD/YY)	Grant Pledged		Prior Years	Expenditures		Total
				In Grant Currency	EUR Value		Current Year		
AUSTRALIA									
Australian Agency for International Development (AusAID)									
Capacity Building Training of Election Administrators in Southern & East Africa	2006-08	P0016	01/05/06 - 31/05/10	AUD 1,400,000	827,119	837,033	-	-	837,033
Building Resources in Democracy Governance and Elections (BRIDGE)	2010-14	P0076-02,03	01/05/11 - 31/12/13	EUR 2,781,795	2,781,795	-	750,964	750,964	750,964
Training Programme in Africa - Phase 2	2010-15	P0078	01/03/10 - 30/06/12	AUD 600,000	441,440	141,195	180,099	180,099	321,294
Asia & the Pacific Programme Development	2011-06	P0083-06	15/07/11 - 31/03/13	AUD 103,488	77,257	-	21,837	21,837	21,837
State of Local Democracy Assessment in the Autonomous region of Muslim Mindanao									
BELGIUM									
The Ministry of Foreign Affairs									
African Traditional Justice Mechanisms - Publication Follow-up	2008-12	P0001	01/01/09 - open	EUR 170,500	170,500	162,315	-	-	162,315
Customary Governance and Democracy Building: Exploring the Links	2008-13	P0002	01/01/09 - open	EUR 181,500	181,500	183,635	-	-	183,635
CANADA									
Canadian International Development Agency (CIDA)									
Midterm Evaluation of the Supreme Electoral Tribunal's Strategic Plan 2008 - 2012 and Support to Elaborate its Strategic Plan 2012 - 2016	2011-04	P0163-01	09/08/11 - 29/02/12	CAD 89,000	65,393	-	35,800	35,800	35,800
Department of Foreign Affairs and International Trade (DFAIT)									
Strengthening the Institutional and Operational Performance of Five Regional Legislative Assemblies in Bolivia	2011-02	P0157-03	10/06/11 - 01/03/13	CAD 249,963	188,069	-	48,443	48,443	48,443
International Development Research Centre (IDRC)									
South - South Capacity Building & Consultative Workshops	2007-13	P0021	01/01/08 - 30/06/10	CAD 144,176	95,831	95,831	-	-	95,831
EUROPEAN UNION									
The European Commission									
				8,950,028	4,069,128	1,214,726	5,283,854		

Training and Technical Assistance Activities related to EU Electoral Observation Missions: Network for Enhanced Electoral and Democratic Support (NEEDS)	2008-01	P0018	01/10/08 - 30/09/11	EUR6,474,577	6,474,577	3,912,059	1,116,857	5,028,916
Study on Strategies and Methodologies for EC Action in Support to Parliaments	2008-17	P0007-01	01/02/09 - 30/09/10	EUR 175,000	175,000	157,070	-	157,070
Support Activities to the Electoral Processes in Egypt	2011-12	P0200	20/09/11 - 19/09/12	EUR 1,203,431	1,203,431	-	62,399	62,399
Supporting Democratic Transition in Libya	2011-13	P0202-01	24/11/11 - 23/11/12	EUR 1,097,020	1,097,020	-	35,470	35,470
FINLAND					360,000	162,069	143,926	305,996
The Ministry of Foreign Affairs								
Supporting Constitution Building in Nepal: Implementation of Rights, Oversight and Accountability Mechanisms of the New Constitution in the Making	2009-07	P0068-01	05/10/09 - 31/01/10	EUR 190,000	190,000	162,069	-	162,069
Support to the Consolidation of Democracy in Nepal	2010-17	P0127-05	01/12/10 - 31/03/12	EUR 190,000	190,000	-	143,926	143,926
Inter American Development Bank					167,325	-	111,512	2,654
Opening Gates: Women in Political Parties and Parliament (I)	2011-05	P0161-03	27/06/11 - 31/12/11	USD 22,860	16,348	-	2,654	2,654
Opening Gates: Women in Political Parties and Parliament (II)	2011-07	P0161-02	05/07/11 - 05/01/12	USD 200,155	150,977	-	108,858	108,858
JAPAN					232,200	-	-	-
Protecting and Promoting the Integrity of the Electoral Process (PIEP)				USD300000	17,878,317	8,137,635	3,616,169	11,753,803
The Royal Ministry of Foreign Affairs								
Constitution Building Programme Phase II 2009-2011	2009-01	P0008-01	01/01/09 - 31/12/11	NOK 31,000,000	3,813,283	1,945,980	1,162,352	3,108,331
Democratic Dialogues and Vision Building in Bolivia 2007-2009	2007-05	P0013	24/04/07 - 30/09/10	NOK 18,500,000	2,207,703	2,199,359	-	2,199,359
African Union Commission - International IDEA Joint Action Plan	2008-15	P0017	24/11/08 - 31/08/10	NOK 5,000,000	568,140	568,405	-	568,405
Support for the Constitution Building Process in Nepal 2006-2009	2006-18	P0043	15/11/06 - 31/01/10	NOK 12,350,000	1,478,731	1,341,280	-	1,341,280
Support to IPD (2): Ball Workshop	2009-09	P0071-03	10/12/09 - 30/08/10	NOK 1,400,000	166,320	166,406	-	166,406
Political Participation and Representation of Women	2009-02	P0075	01/01/10 - 31/12/12	NOK 8,500,000	1,061,740	157,217	414,021	571,238
African Union - International IDEA Joint Action Plan 2010-2011	2010-03	P0077-08	01/01/10 - 31/12/11	NOK 10,000,000	1,270,931	416,422	642,000	1,058,422
Nepal - Constitution Building and Electoral Capacity	2009-11	P0127	27/01/10 - 31/12/12	NOK 18,000,000	2,303,800	589,051	570,002	1,159,053
Constitution Making Workshop Stockholm	2010-18	P0127-04	26/11/10 - 25/02/11	NOK 1,125,000	138,150	130,409	(966)	129,441
Support to Andean Region	2010-02	P0136	01/01/10 - 31/12/13	NOK 32,000,000	4,097,920	623,107	753,982	1,377,089

Supporting the Process of Democratic Transition and Consolidation in Haiti 2011-09 P0164-01 11/08/11 - 10/08/12 NOK 6,000,000 771,600 - 74,779 74,779

Organization of American States 73,505 23,224 47,184 70,408

Gender Methodology 2010-10 P0141-01 29/06/10 - 30/06/11 USD 97,561 73,505 23,224 47,184 70,408

ROMANIA 50,000 - 30,988 30,988

Assessment of Electoral Processes in the WANA region 2011-16 P0204-01 01/11/11 - 31/12/12 EUR 50,000 50,000 - 30,988 30,988

SPAIN 1,938,300 1,304,318 571,482 1,875,799

The Spanish Agency for International Cooperation (AECI)

Strengthening Democracy through More Inclusive Party Systems and Political Organizations 2008-11 P0015 01/07/07 - 31/08/09 EUR 396,000 396,000 396,002 - 396,002

Reforms for a Better Democracy in Latin America 2007-14 P0026 17/10/07 - open EUR 300,000 300,000 288,370 22,466 310,836

Democracy at the Local Level in the Arab World 2007-21 P0041 01/07/07 - 31/05/10 EUR 431,300 431,300 382,673 9,500 392,173

Strengthening Democracy Adean region 2010-05 P0142 15/07/10 - 14/01/12 EUR 668,000 668,000 137,289 496,435 633,724

Ayuntamiento de Madrid / Fundacion Instituto Universitario de Investigacion Jose Ortega y Gasset (FOG)

Capacity building to improve the management of social programmes in Huancavelica, Peru 2008-16 P0065-01 07/08/09 - 07/05/10 EUR 143,000 143,000 99,984 43,080 143,064

SWEDEN 2,648,300 1,855,747 414,021 2,269,768

The Ministry of Foreign Affairs

Democracy in Development 2008-08 P0012-01 01/07/08 - 30/06/10 SEK 18,000,000 1,698,300 1,698,530 - 1,698,530

Political Participation and Representation of Women 2009-03 P0075 01/01/10 - 31/12/12 EUR 950,000 950,000 157,217 414,021 571,238

SWITZERLAND 1,271,540 194,759 380,579 575,338

The Swiss Federal Department of Foreign Affairs

Developing a Reconciliation Resource Network 2006-09 P0025 01/06/06 - 30/06/09 EUR 25,000 25,000 23,921 - 23,921

Participatory Democracy (Swiss '09) 2009-12 P0073-03 01/01/08 - 31/12/10 CHF 200,000 131,580 131,580 - 131,580

Participatory Democracy (Swiss '10) 2010-04 P0073-04 01/01/08 - 30/04/11 CHF 200,000 148,960 39,258 109,702 148,960

Elections and Conflict: Assessment and Violence Prevention Tool 2010-09 P0110-02 01/01/10 - 31/12/11 EUR 150,000 150,000 - 122,195 122,195

North Africa Programme (Basket Fund) 2011-10 P0203 01/10/11 - 31/12/13 CHF 1,000,000 816,000 - 148,682 148,682

UNITED NATIONS 3,186,365 1,503,168 685,152 2,175,054

The United Nations Development Program (UNDP)

3

Sudan Political Parties Development	2008-06	P0036	26/10/08 - 25/01/11	USD 1,335,067	1,032,857	1,033,646	-	1,033,646
Global Programme for Electoral Cycle Support	2010-01	P0111-02	01/05/10 - 30/06/12	USD 2,608,260	1,947,397	333,538	616,459	949,997
Strengthening of PPs in Bolivia	2009-06	P0137	22/04/10 - 31/10/10	USD 70,092.97	48,827	53,396	-	53,396
The United Nations Office for Project Services (UNOPS)								
Roundtable Gender and Democracy	2011-03	P0138-03	29/04/11 - 07/05/11	USD 18,201.20	13,150	-	13,267	-
United Nations Development Fund for Women								
Gender and Political Parties Seminar and Gender Monitoring Media in Electoral Campaigns in Bolivia, Costa Rica and Dominican Republic	2009-08	P0074	01/11/09 - 15/08/10	USD 107,000	72,659	82,588	-	82,588
United Nations Entity for Gender Equality and the Empowerment of Women								
Gender Media Monitoring	2011-01	P0158-01	30/01/11 - 30/06/11	USD 31,340	23,089	-	22,225	22,225
Gender Media Monitoring in Argentina and Guatemala	2011-08	P0162-01	25/07/11 - 31/12/11	USD 68,364	48,385	-	33,201	33,201
UNITED STATES OF AMERICA					144,155	-	49,304	49,304
The Ford Foundation								
Intercultural Dialogue Peru	2010-16	P0156-01	01/01/11 - 30/06/12	USD 195,000	144,155	-	49,304	49,304
TOTAL					43,981,139	20,670,056	8,302,187	28,850,117

Schedule of Expenditure

For the years ended December 31, 2011 and 2010

(In EUR)

EXPENDITURE	2011			2010
	Restricted Funds	UnRestricted Funds	Total	Total
OPERATIONS	8,302,057	12,893,530	21,195,617	19,042,170
Global Programmes	3,955,608	5,890,334	9,845,942	8,243,110
Constitution Building Processes	1,162,352	70,610	1,232,962	3,745,477
Democracy, Conflict & Security	0	446,048	446,048	523,756
Democracy & Development	0	620,463	620,463	1,224,122
Democracy & Diversity	0	490,606	490,606	769,526
Democracy & Gender	828,043	-	828,043	533,668
Electoral Processes	1,965,213	1,388,089	3,353,303	281,087
Global Programmes	0	1,576,049	1,576,049	355,034
Political Parties	0	606,577	606,577	635,847
State of Democracy	0	691,892	691,892	174,592
European Union Presidency Project	0	0	0	510,592
Democracy in Development: Building a More Effective EU Agenda			0	510,592
Latin America Regional Programme	1,738,313	1,964,638	3,702,950	3,675,780
Andean Region	1,641,068	527,828	2,168,896	2,665,239
Haiti	74,779	0	74,779	0
LAC Regional Office (CR)	22,466	1,436,809	1,459,275	1,010,541
Africa and the Middle East Programme	1,402,464	2,816,614	4,219,078	4,111,382
Africa	0	63,540	63,540	3,582,561
Arab World	9,500	1,283	10,783	528,821
Joint Action Plan	642,000	338,238	980,238	0
South Africa	750,964	1,666,067	2,417,031	0
Sudan	0	257,582	257,582	0
West Africa	0	489,904	489,904	0
Western Asia - North Africa	277,539	699,454	976,993	0
Asia and the Pacific	914,897	878,811	1,793,708	1,618,513
Nepal	712,961	(131)	712,830	984,873
Asia & Pacific	201,936	878,942	1,080,878	633,640
Annual Democracy Forum	0	0	0	59,069
Ghana Democracy Forum			0	59,069
External Relations and Governance support	13,267	643,679	656,946	823,733
Permanent Mission to the United Nations (New York)	13,267	643,679	656,946	689,778
Inter-Regional Dialogue	0	-	0	133,956
MANAGEMENT AND ADMINISTRATION	825,295	4,031,240	4,856,536	3,502,150
Secretary General Office	232,083	1,133,635	1,365,718	646,076
External Relations and Governance support	167,809	819,679	987,487	835,165
Director of Operations	-	-	0	702,161
Communications and Publications	156,188	762,919	919,107	883,963

A

Strategy & Policy	105,815	516,864	622,679	-
Corporate Services	163,400	798,144	961,544	439,788
Indirect cost recovery	(825,295)	(1,706,739)	(2,532,034)	(3,807,900)
TOTAL EXPENDITURE	8,302,087	15,218,032	23,520,119	18,741,431

16